

WE ARE: YOUR PACKAGING

OVAL & ROUND RANGE IN PET

Our wide choice of off-the-shelf PET oval and round packs have been designed to give brands a leading-edge solution. This diverse collection can achieve that all important point of difference for a host of product applications and are available in 50ml to 500ml capacity sizes.



Left to right: 250ml Bevelled Rectangular (Ref: 1089) with Shallow Cap (Ref: 3022), 250ml Bari (Ref: 1078) with Flip Top Cap (Ref: 3016), 200ml Lazio Oval (Ref: 1047) with Disc Top Cap (Ref: 3033) and 300ml Messina (Ref: 1073) with Flip Top Cap (Ref: 3016).

250ml CECINA OVAL

| | |
|-----------------------|---------|
| Bottle Reference..... | 1104 |
| Brimful Capacity..... | 270ml |
| Height..... | 174mm |
| Major/Minor Axis..... | 67x39mm |
| Neck Finish..... | Snap-On |

○ Profile



CLOSURES TO SUIT

Oval Flip Top..... Ref: 3030

250ml GENOA OVAL

| | |
|-----------------------|---------|
| Bottle Reference..... | 1062 |
| Brimful Capacity..... | 270ml |
| Height..... | 157mm |
| Major/Minor Axis..... | 67x40mm |
| Neck Finish..... | 24/415 |

○ Profile



24/410 CLOSURES TO SUIT

Shallow Cap..... Ref: 3022
 Flip Top Cap..... Ref: 3017
 Flared Disc Cap..... Ref: 3026
 Disc Top Cap..... Ref: 3033

Also suitable for use with any standard 24/410 fitment

| | |
|-----------------------|---------|
| Bottle Reference..... | 1062 |
| Brimful Capacity..... | 273ml |
| Height..... | 165mm |
| Major/Minor Axis..... | 67x40mm |
| Neck Finish..... | 24/415 |

○ Profile



24/415 CLOSURES TO SUIT

Tall Radiused Cap*..... Ref: 3011
 Shallow Cap*..... Ref: 3005
 Flip Top Cap..... Ref: 3016

*Plug/spigot version available
 Also suitable for use with any standard 24/415 fitment

300ml PALERMO

| | |
|-----------------------|---------|
| Bottle Reference..... | 1074 |
| Brimful Capacity..... | 328ml |
| Height..... | 174mm |
| Major/Minor Axis..... | 74x40mm |
| Neck Finish..... | 24/410 |

○ Profile



24/410 CLOSURES TO SUIT

Shallow Cap..... Ref: 3022
 Flip Top Cap..... Ref: 3017
 Flared Disc Cap..... Ref: 3026
 Disc Top Cap..... Ref: 3033

Also suitable for use with any standard 24/410 fitment

| | |
|-----------------------|---------|
| Bottle Reference..... | 1074 |
| Brimful Capacity..... | 328ml |
| Height..... | 182mm |
| Major/Minor Axis..... | 74x40mm |
| Neck Finish..... | 24/415 |

○ Profile



24/415 CLOSURES TO SUIT

Tall Radiused Cap*..... Ref: 3011
 Shallow Cap*..... Ref: 3005
 Flip Top Cap..... Ref: 3016

*Plug/spigot version available
 Also suitable for use with any standard 24/415 fitment

STANDARD CLOSURE GUIDE



Tall Radiused Caps
 24/415.....Ref: 3011*
 20/415.....Ref: 3013*
 See page 99



Shallow Caps
 20/415.....Ref: 3004*
 24/410.....Ref: 3022
 24/415.....Ref: 3005*
 See page 99



Double Wall Caps
 20/415.....Ref: 3001
 24/415.....Ref: 3014*
 24/415.....Ref: 3002*
 See page 99



Round Flip Tops
 20/415.....Ref: 3018
 24/410.....Ref: 3017
 24/415.....Ref: 3016
 See page 99



Double Wall Flip Top
 24/410.....Ref: 3038
 See page 99



Oval Flip Top
 Snap-On Ref: 3030
 See page 99



Disc Top
 24/410.....Ref: 3033
 See page 100



Flared Disc Top
 24/410.....Ref: 3026
 See page 100



Reducer Plugs
 24mm.....Ref: 3998
 20mm.....Ref: 3999
 See page 100



Non Aerosol Overcaps
 Snap-On Ref: 3009
 Snap-On Ref: 3003
 Snap-On Ref: 3000
 Snap-On Ref: 3010
 See page 100

* Feature spigot seal

WE CAN ELEVATE YOUR BRAND

Looking for a tactile finish, we can provide high build varnishing for an embossed point of difference.

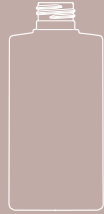
See pages 24 and 25



150ml LAZIO OVAL

Bottle Reference.....1094
 Brimful Capacity.....168ml
 Height.....127mm
 Major/Minor Axis.....58x36mm
 Neck Finish.....24/410

○ Profile



24/410 CLOSURES TO SUIT

Shallow Cap.....Ref. 3022
 Flip Top Cap.....Ref. 3017
 Flared Disc Cap.....Ref. 3026
 Disc Top Cap.....Ref. 3033

Also suitable for use with any standard 24/410 fitment

Bottle Reference.....1094
 Brimful Capacity.....168ml
 Height.....135mm
 Major/Minor Axis.....58x36mm
 Neck Finish.....24/415

○ Profile



24/415 CLOSURES TO SUIT

Tall Radiused Cap*.....Ref. 3011
 Shallow Cap*.....Ref. 3005
 Flip Top Cap.....Ref. 3016

*Plug/spigot version available
 Also suitable for use with any standard 24/415 fitment

200ml LAZIO OVAL

Bottle Reference.....1047
 Brimful Capacity.....221ml
 Height.....164mm
 Major/Minor Axis.....58x36mm
 Neck Finish.....24/410

○ Profile



24/410 CLOSURES TO SUIT

Shallow Cap.....Ref. 3022
 Flip Top Cap.....Ref. 3017
 Flared Disc Cap.....Ref. 3026
 Disc Top Cap.....Ref. 3033

Also suitable for use with any standard 24/410 fitment

Bottle Reference.....1047
 Brimful Capacity.....224ml
 Height.....172mm
 Major/Minor Axis.....58x36mm
 Neck Finish.....24/415

○ Profile



24/415 CLOSURES TO SUIT

Tall Radiused Cap*.....Ref. 3011
 Shallow Cap*.....Ref. 3005
 Flip Top Cap.....Ref. 3016

*Plug/spigot version available
 Also suitable for use with any standard 24/415 fitment

200ml BROADWAY OVAL

Bottle Reference.....1067
 Brimful Capacity.....218ml
 Height.....157mm
 Major/Minor Axis.....65x36mm
 Neck Finish.....Snap Neck

○ Profile



CLOSURES TO SUIT

Aptar Small Joy

250ml BROADWAY OVAL

Bottle Reference.....1044
 Brimful Capacity.....270ml
 Height.....167mm
 Major/Minor Axis.....69x39mm
 Neck Finish.....Snap Neck

○ Profile



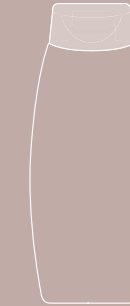
CLOSURES TO SUIT

Aptar Small Joy

300ml BROADWAY OVAL

Bottle Reference.....1052
 Brimful Capacity.....327ml
 Height.....180mm
 Major/Minor Axis.....75x40mm
 Neck Finish.....Snap Neck

○ Profile



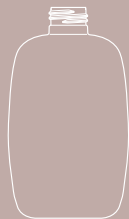
CLOSURES TO SUIT

Aptar Small Joy

250ml PARMA OVAL

Bottle Reference.....1030
 Brimful Capacity.....270ml
 Height.....129mm
 Major/Minor Axis.....74x46mm
 Neck Finish.....24/410

○ Profile



24/410 CLOSURES TO SUIT

Shallow Cap.....Ref. 3022
 Flip Top Cap.....Ref. 3017
 Flared Disc Cap.....Ref. 3026
 Disc Top Cap.....Ref. 3033

Also suitable for use with any standard 24/410 fitment

Bottle Reference.....1030
 Brimful Capacity.....273ml
 Height.....137mm
 Major/Minor Axis.....74x46mm
 Neck Finish.....24/415

○ Profile



24/415 CLOSURES TO SUIT

Tall Radiused Cap*.....Ref. 3011
 Shallow Cap*.....Ref. 3005
 Flip Top Cap.....Ref. 3016

*Plug/spigot version available
 Also suitable for use with any standard 24/415 fitment

250ml BRERA OVAL

Bottle Reference.....1014
 Brimful Capacity.....260ml
 Height.....176mm
 Major/Minor Axis.....56x42mm
 Neck Finish.....24/410

○ Profile



24/410 CLOSURES TO SUIT

Shallow Cap.....Ref. 3022
 Flip Top Cap.....Ref. 3017
 Flared Disc Cap.....Ref. 3026
 Disc Top Cap.....Ref. 3033

Also suitable for use with any standard 24/410 fitment

Bottle Reference.....1014
 Brimful Capacity.....263ml
 Height.....184mm
 Major/Minor Axis.....56x42mm
 Neck Finish.....24/415

○ Profile



24/415 CLOSURES TO SUIT

Tall Radiused Cap*.....Ref. 3011
 Shallow Cap*.....Ref. 3005
 Flip Top Cap.....Ref. 3016

*Plug/spigot version available
 Also suitable for use with any standard 24/415 fitment

200ml BROADWAY TOTTLE

Bottle Reference.....1077
 Brimful Capacity.....218ml
 Height.....153mm
 Major/Minor Axis.....67x43mm
 Neck Finish.....Snap Neck

○ Profile



CLOSURES TO SUIT

Aptar Small Joy

250ml BROADWAY TOTTLE

Bottle Reference.....1076
 Brimful Capacity.....273ml
 Height.....173mm
 Major/Minor Axis.....67x44mm
 Neck Finish.....Snap Neck

○ Profile



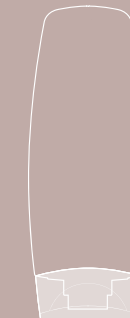
CLOSURES TO SUIT

Aptar Small Joy

300ml BROADWAY TOTTLE

Bottle Reference.....1075
 Brimful Capacity.....329ml
 Height.....185mm
 Major/Minor Axis.....72x43mm
 Neck Finish.....Snap Neck

○ Profile



CLOSURES TO SUIT

Aptar Small Joy

STANDARD CLOSURE GUIDE



Tall Radiused Caps
 24/415.....Ref. 3011*
 20/415.....Ref. 3013*
 See page 99



Shallow Caps
 20/415.....Ref. 3004*
 24/410.....Ref. 3022
 24/415.....Ref. 3005*
 See page 99



Double Wall Caps
 20/415.....Ref. 3001
 24/415.....Ref. 3014*
 24/415.....Ref. 3002*
 See page 99



Round Flip Tops
 20/415.....Ref. 3018
 24/410.....Ref. 3017
 24/415.....Ref. 3016
 See page 99



Double Wall Flip Top
 24/410.....Ref. 3038
 See page 99



Oval Flip Top
 Snap-On Ref. 3030
 See page 99



Disc Top
 24/410.....Ref. 3033
 See page 100



Flared Disc Top
 24/410.....Ref. 3026
 See page 100



Reducer Plugs
 24mm.....Ref. 3998
 20mm.....Ref. 3999
 See page 100



Non Aerosol Overcaps
 Snap-On Ref. 3009
 Snap-On Ref. 3003
 Snap-On Ref. 3000
 Snap-On Ref. 3010
 See page 100

* Feature spigot seal